



Design for a changing world.

Solomon Cordwell Buenz (SCB) is an architecture, interior design, and planning firm with a thoughtful design vision and a dynamic national imprint. Since 1931, SCB has made a lasting visual impact on skylines, campuses, and neighborhoods nationwide. From offices in Chicago, Boston, San Francisco, and Seattle we offer our expertise to clients across the country, helping them achieve their goals, serve their constituents, and create unique built environments. Our approach is to ask questions, listen, and develop the best design solution for each individual project. We are future-oriented, continually challenging ourselves to design to a higher standard, innovate at every level, and give our clients more as we achieve design excellence.

Aviation

SCB has an extensive resume of airport projects, each of which address the realities facing today's aviation industry and the challenges of future air travel operations. Our work extends from the new O'Hare Global Terminal and Concourse and United Airlines flagship terminal at Chicago's O'Hare International Airport to the Rickenbacker International Airport in Columbus Ohio; from the interior design for elegant international first class lounges to intermodal parking facilities and large-scale, highly technological sortation facilities for express cargo. Through our experience on a wide variety of aviation projects we have established relationships with top consultants across all disciplines and the full spectrum of aviation design. Regardless of the scale or type of facility, SCB consistently provides our clients with thoughtful and efficient design solutions that are welcoming, flexible, and sensitive to the needs of travelers.

The design of an airport can establish lasting impressions of a city and its people. While the functional criteria driving the planning and design of airport facilities invariably focuses on the clarity of circulation for the passengers and their baggage, the successful execution of these functional design parameters is only the first step in creating the positive user experience. It is no longer adequate to merely create efficient passenger processing facilities. To be truly successful, today's airports need to enhance the traveler experience by providing a relaxed check-in and security environment, an appealing variety of dining and shopping choices, and a calming boarding lounge atmosphere. In this respect, successful airports are blurring the lines between the travel and the hospitality markets, making each traveler feel welcome. Ultimately, our goal as designers is to not only meet the demanding functional and technical requirements of aviation design, but to transcend them; creating a sense of both place and passage, and creating a portal between a community and the world at large.



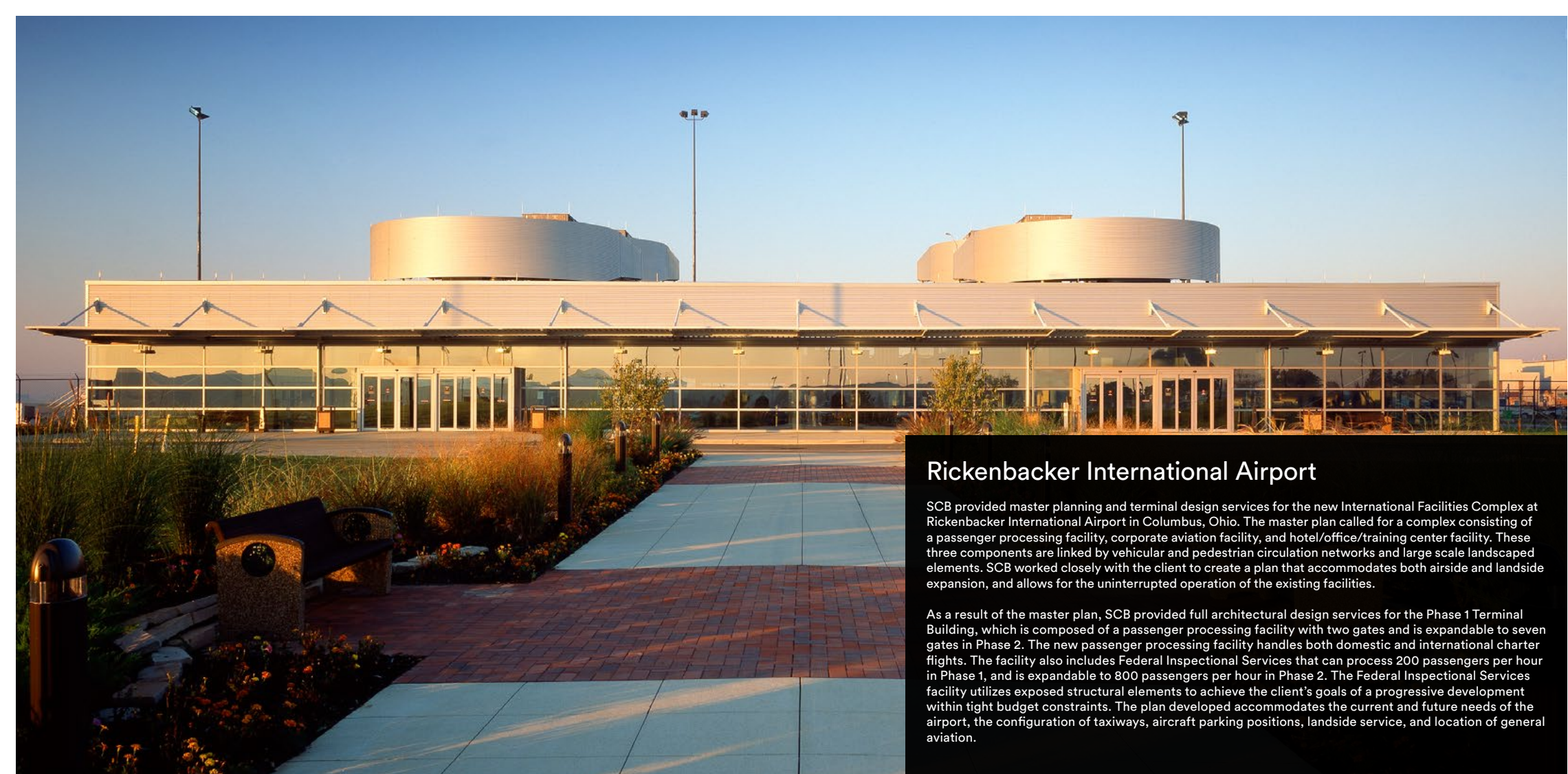
O'Hare Global Terminal and Concourse

Led by Jeanne Gang, Studio ORD's design for the new O'Hare Global Terminal and Global Concourse celebrates Chicago's history as a city shaped by lines of movement and extends that legacy for the 21st century. Like the confluence of the Chicago River, the design's converging three branches create a central hub that establishes a vibrant new neighborhood in the heart of O'Hare's campus.

Surrounding the Oculus is a rhythmic, pleated roof of long-span steel trusses. Clad in wood and emphasizing the building's curving form, the pleats are spaced and oriented to maximize natural daylight and energy efficiency. From inside, their directionality gently guides passengers through the space. When seen from above, the building's form greets passengers with an easily recognizable, distinctly Chicago icon: the city's "Y symbol," or Municipal Device, that represents the branching Chicago River.

Studio ORD is a joint venture comprised of Studio Gang, Solomon Cordwell Buenz (SCB), Corgan, Milhouse Engineering & Construction, Inc. and STLarchitects. As Executive Architect, SCB is managing the project team, technical execution, and delivery of the O'Hare Global Terminal and Concourse.





Rickenbacker International Airport

SCB provided master planning and terminal design services for the new International Facilities Complex at Rickenbacker International Airport in Columbus, Ohio. The master plan called for a complex consisting of a passenger processing facility, corporate aviation facility, and hotel/office/training center facility. These three components are linked by vehicular and pedestrian circulation networks and large scale landscaped elements. SCB worked closely with the client to create a plan that accommodates both airside and landside expansion, and allows for the uninterrupted operation of the existing facilities.

As a result of the master plan, SCB provided full architectural design services for the Phase 1 Terminal Building, which is composed of a passenger processing facility with two gates and is expandable to seven gates in Phase 2. The new passenger processing facility handles both domestic and international charter flights. The facility also includes Federal Inspectional Services that can process 200 passengers per hour in Phase 1, and is expandable to 800 passengers per hour in Phase 2. The Federal Inspectional Services facility utilizes exposed structural elements to achieve the client's goals of a progressive development within tight budget constraints. The plan developed accommodates the current and future needs of the airport, the configuration of taxiways, aircraft parking positions, landside service, and location of general aviation.



Abu Dhabi Intermodal Transit Center

SCB led an international consulting team in creating the Airport City Master Plan at Abu Dhabi International Airport. Conceived as a landmark development that will complement the new Midfield Passenger Terminal from a design, economic, and connectivity perspective, the centerpiece of the development will be the new Intermodal Transit Center. This transit hub will serve as a gateway to the new terminal and Airport City mixed-use development, and become the regional transportation transfer point for thousands of passengers traveling by bus, rail, and air.



Terminal 5 Garage

The T5 Garage is a new, 700,000 square-foot parking complex and part of the greater O'Hare 21 program. The 6-level, 2,390 stall facility will support the existing T5 Terminal and provide public parking, rental car space, a ground transportation center, transit connections and a curbside pick-up and drop-off for ridesharing services.

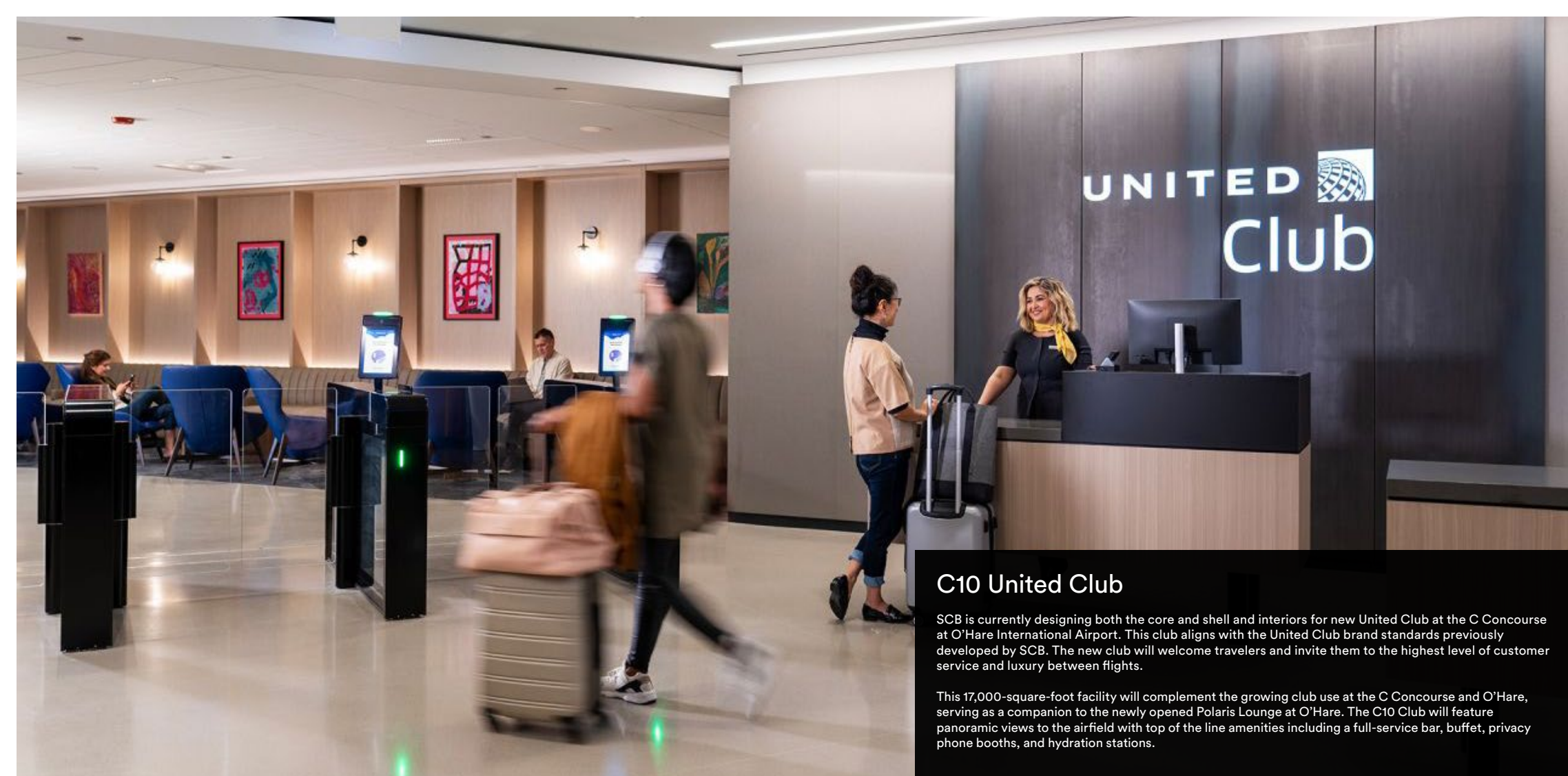
The pedestrian cores will be a unique vista point for visitors as it will be one of the highest publicly accessible points of the international airport, opening up unobstructed views to Terminal 5 and the airfield. To enhance the customer experience, the facility will feature EV charging stations and state of the art technology. A future planned covered pedestrian bridge will guide users safely from the parking garage to the terminal.



FedEx Cargo Facility

The 370,000-square-foot, LEED Silver FedEx Cargo Facility, located at O'Hare International Airport, is composed of four buildings - World Service Center, Sort Building, Aircraft Maintenance Building, and Vehicle Maintenance Building. Public access is through the World Service Center (WSC), which contains management offices, conference rooms, training rooms, a break room, and a public service center. The building features a vegetated roof, high-efficiency mechanical and plumbing systems, and a high-performance building envelope. The WSC connects to the secure Sort Building via a 300-foot-long pedestrian bridge spanning over the active airfield and separating the two buildings.

The Sort Building contains the material handling systems and sortation matrix, and other support spaces. The Aircraft Maintenance building provides service and support to crews maintaining air operations for FedEx's aircraft, while the vehicle maintenance building contains ground service equipment bays, vehicle storage, and a full-size truck wash bay.



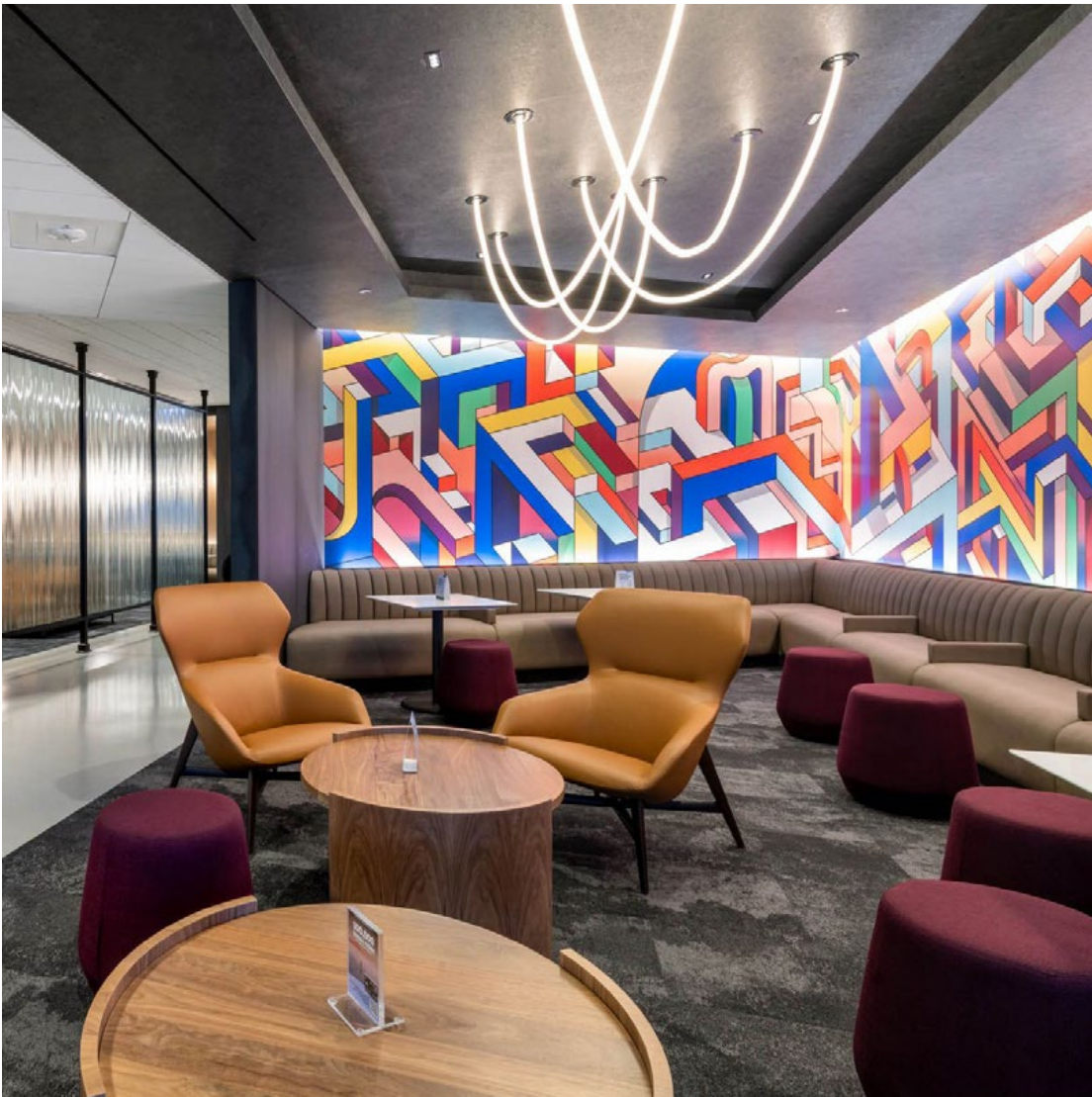
UNITED 
Club

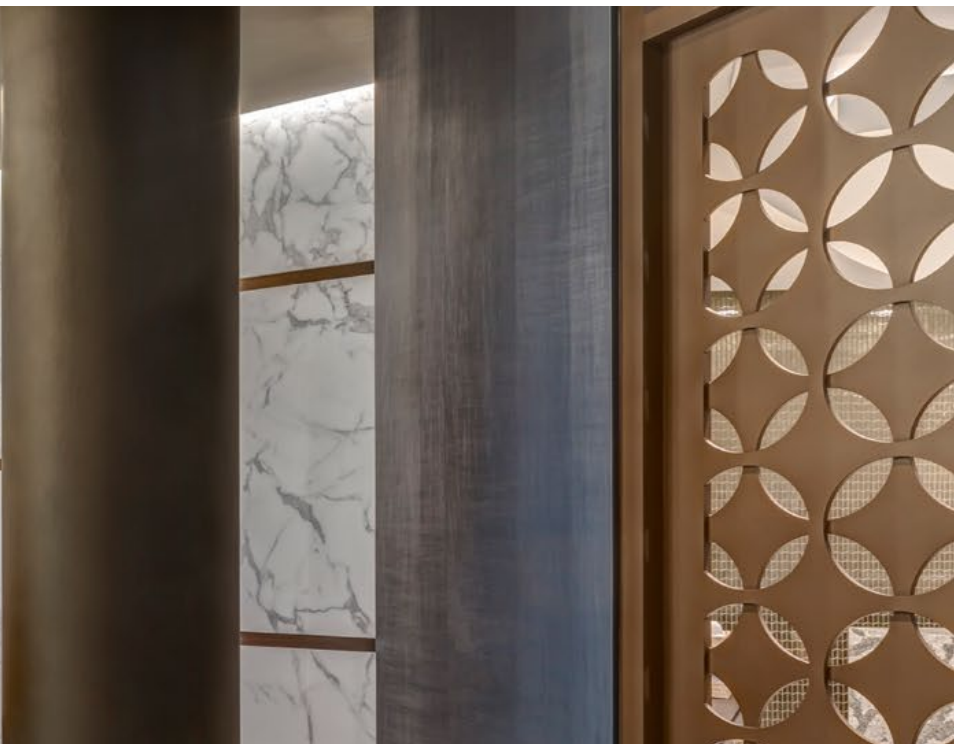
C10 United Club

SCB is currently designing both the core and shell and interiors for new United Club at the C Concourse at O'Hare International Airport. This club aligns with the United Club brand standards previously developed by SCB. The new club will welcome travelers and invite them to the highest level of customer service and luxury between flights.

This 17,000-square-foot facility will complement the growing club use at the C Concourse and O'Hare, serving as a companion to the newly opened Polaris Lounge at O'Hare. The C10 Club will feature panoramic views to the airfield with top of the line amenities including a full-service bar, buffet, privacy phone booths, and hydration stations.







United Polaris Lounges

SCB continues our long-standing relationship with United Airlines as the design partner for the new luxury passenger lounge, United Polaris. A key component of the airline's reimagined international business class experience, the lounges are strategically deployed in nine airports worldwide. SCB has designed over 100,000 square feet of Polaris-branded space to date, focusing on providing exclusivity, personalization, and user-comfort for United's premier customers. The primary design objective is to generate a sense of continuity between the on-board cabin environment and the lounge experience. SCB achieves this through thoughtful spatial planning, creating different zones within the lounges that celebrate the excitement of travel. SCB has also incorporated numerous hospitality-level amenities into the lounge to support United's vision for an unprecedented standard of guest services. SCB's studied use of materials, distinctive lighting, and impactful art creates a truly differentiated experience for travelers.

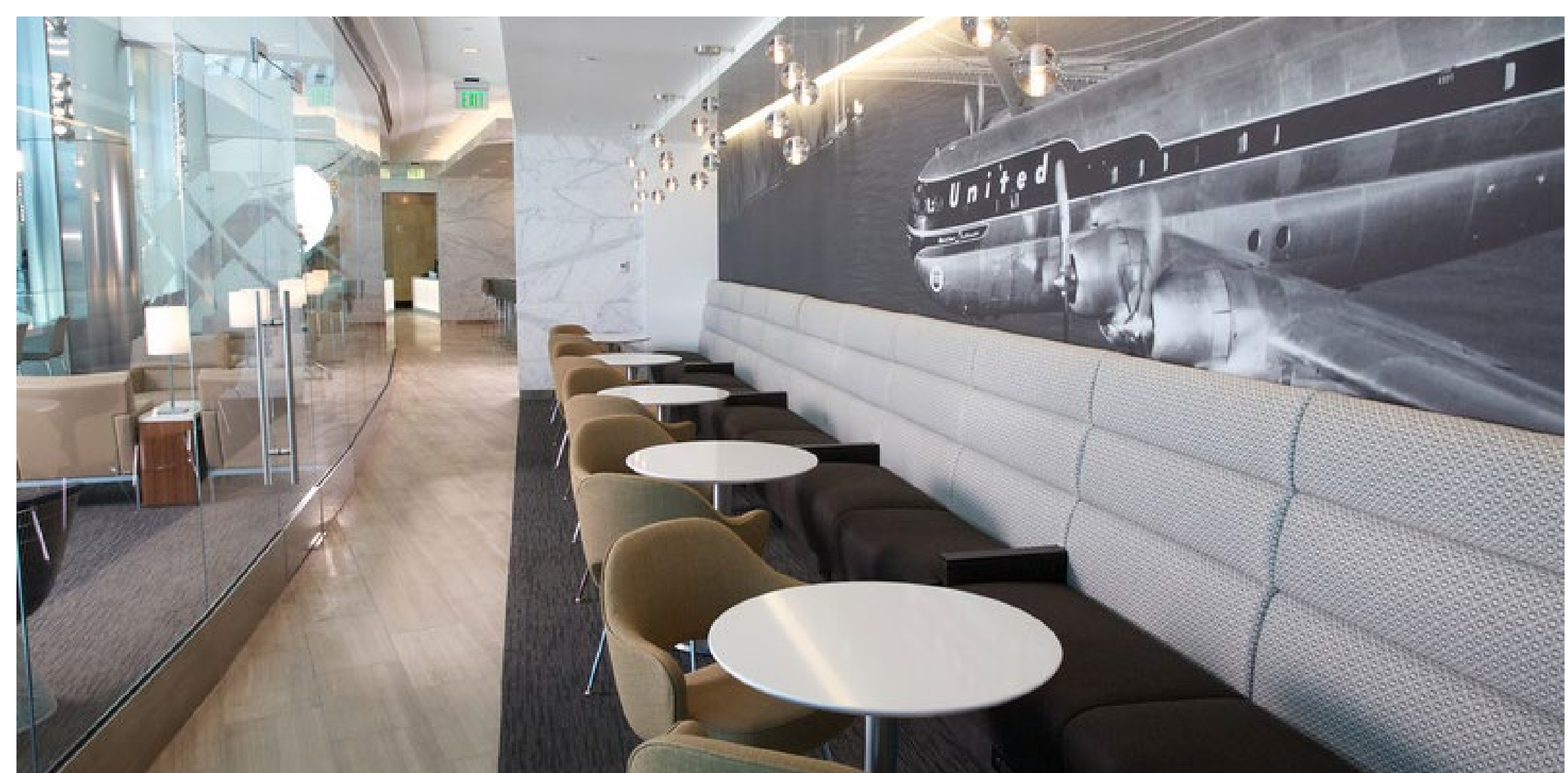






United Clubs

SCB worked with United Airlines to establish their signature design style and branding of their domestic clubs through architectural finishes and furnishings. Our team successfully met and continues to meet United's design goals by creatively redefining the concept of the lounge spaces in regards to relaxation, recreation, food and beverage, and productivity. SCB's designs furthers the position of the United brand in the marketplace and caters to their valued customer base. Throughout each design process, SCB is diligent in adhering to schedule, budgetary, and sustainability guidelines, as well as carefully considering appropriate regional design aesthetics. The success of past clubs has allowed SCB to continue our long-standing relationship with United through the design and furniture standards for all future new and renovated clubs.



Aviation Experience

TERMINAL/OPERATIONS

O'Hare Global Terminal
O'Hare International Airport
 2.2 million sf new terminal

Rickenbacker International Airport
 Master plan and terminal design for international facilities complex, FIS facility

American Airlines Terminal 2 and 3
O'Hare International Airport
 Enhancements to 5 existing skycaps

Terminal 1 SSCP 1 & 2 Modifications
O'Hare International Airport
 Installation of new secured screening checkpoint lanes

Connect Chicago Alliance Terminal 5 Parking Garage
O'Hare International Airport
 2,600-space parking garage

Chicago Department of Aviation Airport Rescue and Fire Fighting Station (ARFF) No. 1
O'Hare International Airport
 6,000 sf addition

Curbside Enhancements
Midway International Airport
 30,000 sf curbside improvements

FedEx Cargo Facility
O'Hare International Airport
 370,000 sf, four-building complex on 48-acre site with management, training, sorting, handling, and vehicle/aircraft maintenance facilities, LEED Silver

Chicago International Carriers Association-Terminal Equipment Company (CICA-TEC)
Terminal 5, FID's/BID's/ VA Display
O'Hare International Airport
 Flight information display, baggage information display, and visual announcements display system replacement

Check-in Counter Upgrade
 – Hartsfield-Jackson Atlanta Int'l Airport
 – Portland Int'l Airport
 – Ronald Reagan Washington National Airport
 – Seattle-Tacoma Int'l Airport

Terminal 1 Curbside
O'Hare International Airport
 22,000 sf modernization and expansion of curbside, baggage handling enhancements, vestibule terminal 4A and 4B

Project Quality Check-in Conversion
O'Hare International Airport
 50,000 sf check-in lobby and security screening checkpoint

United Airlines
Project Quality Check-in Conversion
Washington Dulles International Airport
 Check-in lobby reconfiguration, replacement of counters and kiosks

Hartsfield-Jackson Atlanta International Airport
 3,400 sf check-in lobby reconfiguration

Terminal 1 Charging Stations
O'Hare International Airport
 Power pole installation in 53 hold rooms

Gate Rebrand
O'Hare International Airport
 7,000 sf gate redesign

Terminal 2, Gate E1A
O'Hare International Airport
 1,000 sf new gate

Terminal 2 Customer Service Center
O'Hare International Airport
 2,000 sf new customer service center

Ronald Reagan Washington National Airport
 4,000 sf check-in lobby reconfiguration

Terminal 1 Lobby Modification
O'Hare International Airport
 20,000 sf lobby reconfiguration, redesign of mods 1-4, and curbside check-in

HOSPITALITY/INTERIORS
United Airlines
United Club C10 Expansion
O'Hare International Airport
 17,000 sf core and shell building expansion for new United Club

United Polaris/Business Class Lounge
Varying 9,000 - 31,000
 – George Bush Int'l Airport
 – Hong Kong Int'l Airport
 – Los Angeles Int'l Airport
 – Narita Int'l Airport
 – Newark Int'l Airport
 – O'Hare Int'l Airport
 – O'Hare Int'l Airport
 – San Francisco Int'l Airport

United Clubs
Varying 3,000 - 25,000 sf
 – Antonio B. Won Pat Int'l Airport
 – Austin-Bergstrom Int'l Airport
 – Boston Logan Int'l Airport
 – Cleveland Int'l Airport

– Hartsfield-Jackson Atlanta Int'l Airport
 – Dallas/Fort Worth Int'l Airport
 – Denver Int'l Airport
 – Ft. Lauderdale-Hollywood Int'l Airport
 – George Bush Intercontinental Airport
 – Heathrow Int'l Airport
 – Honolulu Int'l Airport
 – John Wayne Airport
 – LaGuardia Int'l Airport

– McCarran Int'l Airport
 – Minneapolis-Saint Paul Int'l Airport
 – Narita Int'l Airport
 – Newark Liberty Int'l Airport
 – O'Hare Int'l Airport
 – Orlando Int'l Airport
 – Philadelphia Int'l Airport
 – Phoenix Int'l Airport
 – Portland Int'l Airport
 – San Francisco Int'l Airport
 – San Antonio Int'l Airport
 – San Diego Int'l Airport
 – Seattle-Tacoma Int'l Airport
 – Washington Dulles Int'l Airport

B6 Red Carpet Club Renovation
O'Hare International Airport
 10,000 sf renovation and expansion, flexible seating/gathering areas, modern business amenities

Global Service Center
O'Hare International Airport
 3,000 sf renovation of displays, check-in kiosks, premium check-in, global services, and interior space

**HOSPITALITY/INTERIORS
(CONT.)**

Global Service Reception/Center

- San Francisco International Airport
2,000 sf global service reception
- O'Hare International Airport
3,000 sf renovation of displays, check-in kiosks, premium check-in, global services, and interior space

Newark Liberty International Airport

- 35,000 sf renovation of three United Clubs
- Renovation of break room

Heathrow International Airport

7,000 sf United Global First Lounge

Break Room Refurbishment

O'Hare International Airport
34,000 sf employee facilities renovation

O'Hare International Airport

- TSA south building expansion
- Lobby re-design
- In-line baggage screening room
- Lobby baggage induction
- Lighting at modules

**C3 Mezzanine Club Core & Shell
Newark Liberty International Airport**

22,000 sf core and shell for C3 mezzanine club

Terminal 1

O'Hare International Airport
16,000 sf expansion and renovation of security checkpoint facilities, queuing space, search areas, and passenger-oriented space

San Francisco International Airport

2,000 sf Global Services Reception

PLANNING

**Intermodal Terminal Master Plan
Gary/Chicago International Airport
Gary, Indiana**

500,000 sf site incorporates passenger rail, passenger vehicles, air travel in commuter facility with parking and amenities

**Fort Lauderdale Intermodal Station
Master Plan**

Fort Lauderdale, Florida
Multi-modal transportation center including bus, light rail, and intercity rail, with office, hotel, and parking functions

**Gary-Chicago Intermodal Terminal
Master Plan
Gary, Indiana**

500,000 sf site with passenger rail, vehicles, and air travel in commuter facility with parking and amenities

**Collateral Land Use Planning
O'Hare International Airport**

5 site, 300+ acre development planning

**Chicago Department of Aviation
Terminal 2, Concourse E/F**

O'Hare International Airport
Master plan for redevelopment of concourses serving United regional jet and Delta operations





Design for a changing world.

Architecture | Interior Design | Planning

www.scb.com



Renee Sprogis-Marohn, AIA
Principal
312.896.1174
renee.sprogismarohn@scb.com



Jay Wilson, RA, LEED AP
Associate Principal
415.216.2423
jay.wilson@scb.com